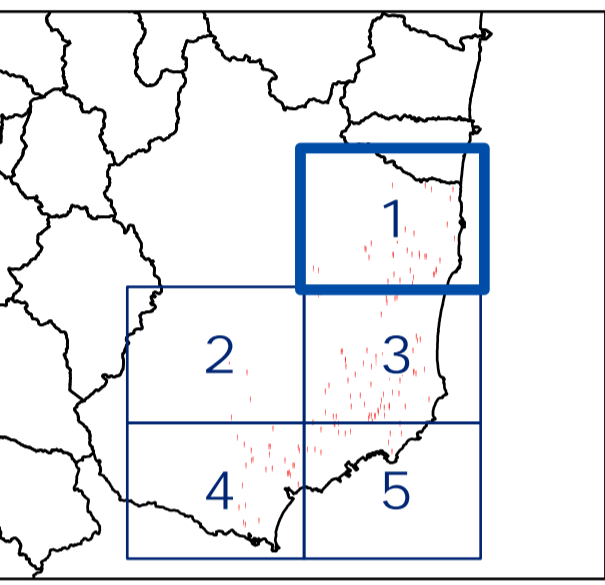


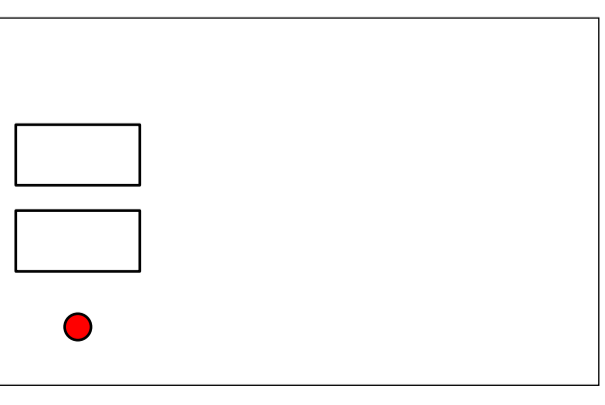
└
S=1:25,000

1 / 5



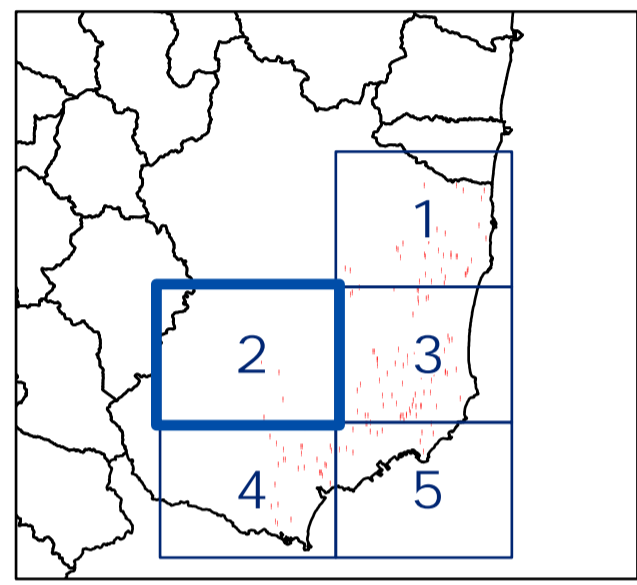
0246-22-7472

Point ID	Height (m)
7204001	89.903
7204002	40
7204003	40
7204004	42.7
7204005	56
7204006	33.34
7204007	31.32
7204008	146.269
7204009	102.284
7204010	42.2
7204011	95.962
7204012	47.901
7204013	8.8
7204014	276.277
7204015	18.0
7204016	96.1562
7204017	96.189
7204018	90.1
7204019	80.0
7204020	146.210
7204021	52.2
7204022	3.5
7204023	2.5
7204024	11.0
7204025	18.0
7204026	100.0
7204027	1.0
7204028	38.0
7204029	223.3
7204030	245.3
7204031	285.2
7204032	12.0
7204033	285.2
7204034	12.0
7204035	12.0
7204036	4.5
7204037	47
7204038	189.190
7204039	0.6



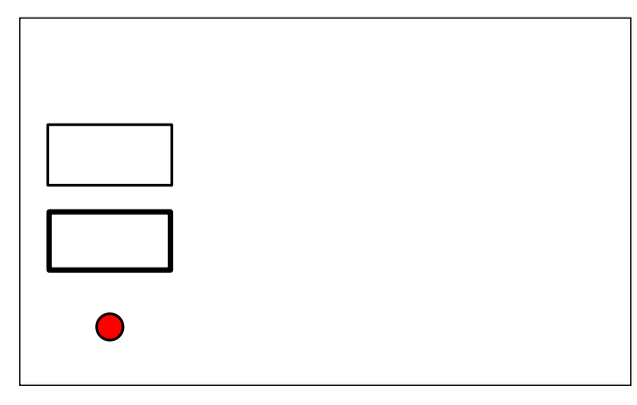
└
S=1:25,000

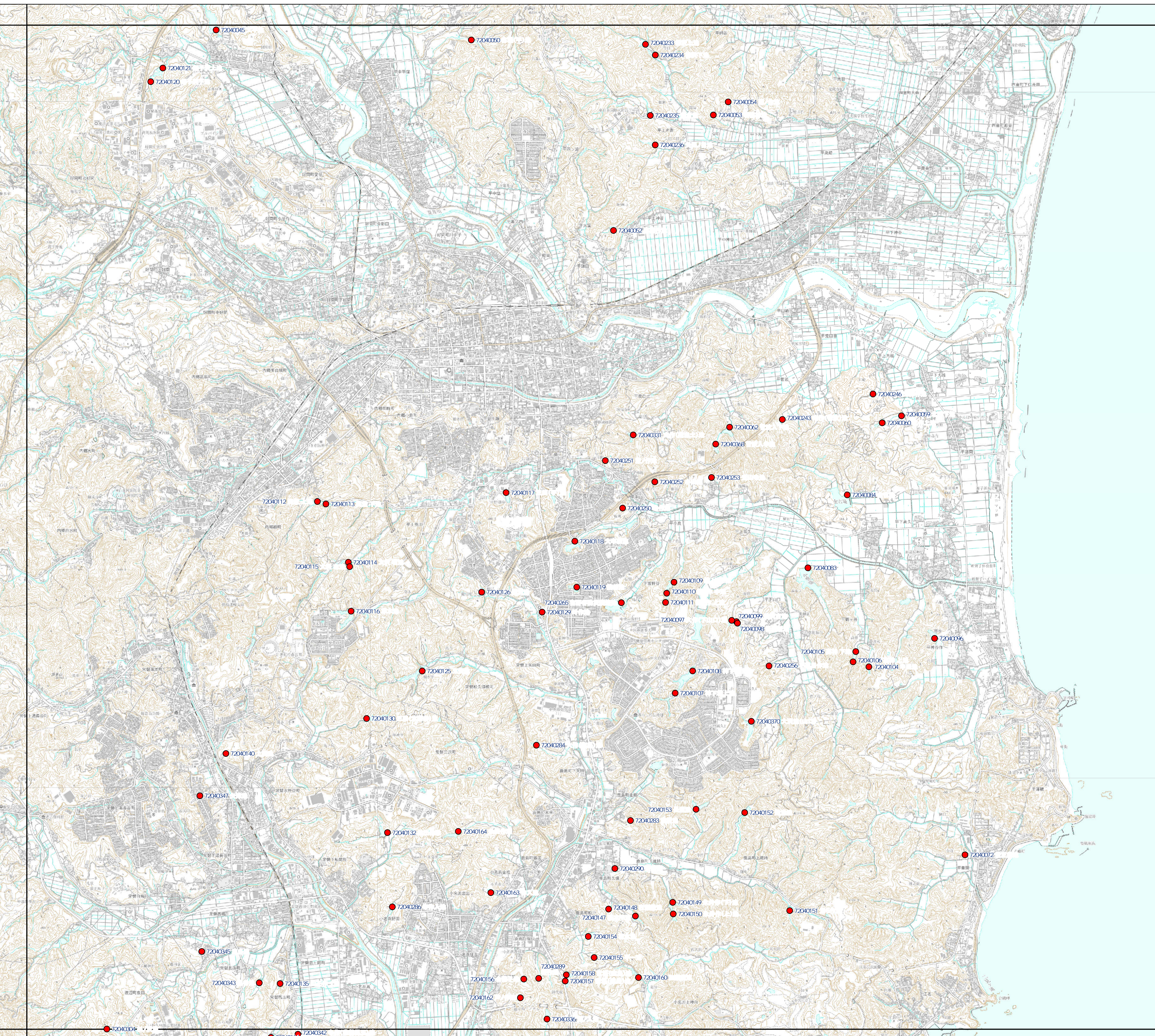
2 / 5




		0246-22-7472
--	--	--------------

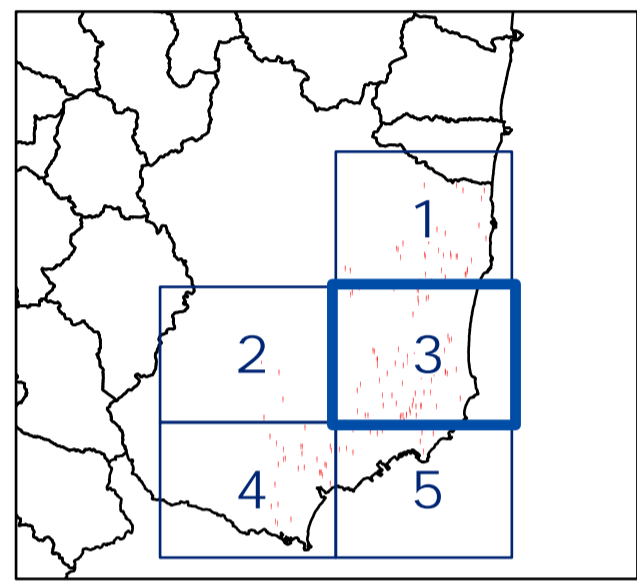
		(m)
72040168	51.2	7.0
72040170	46.1	179.0
72040173	79	181.0
72040177		30.0





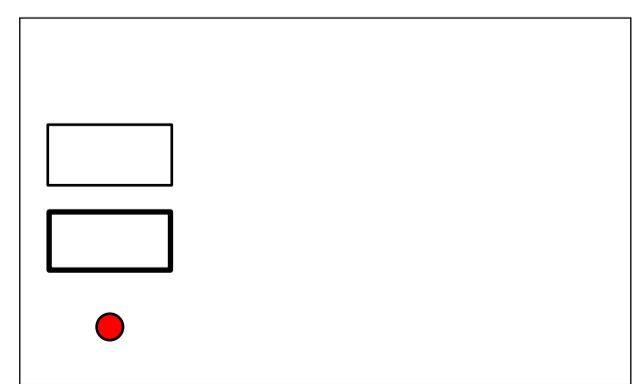

 S=1:25,000

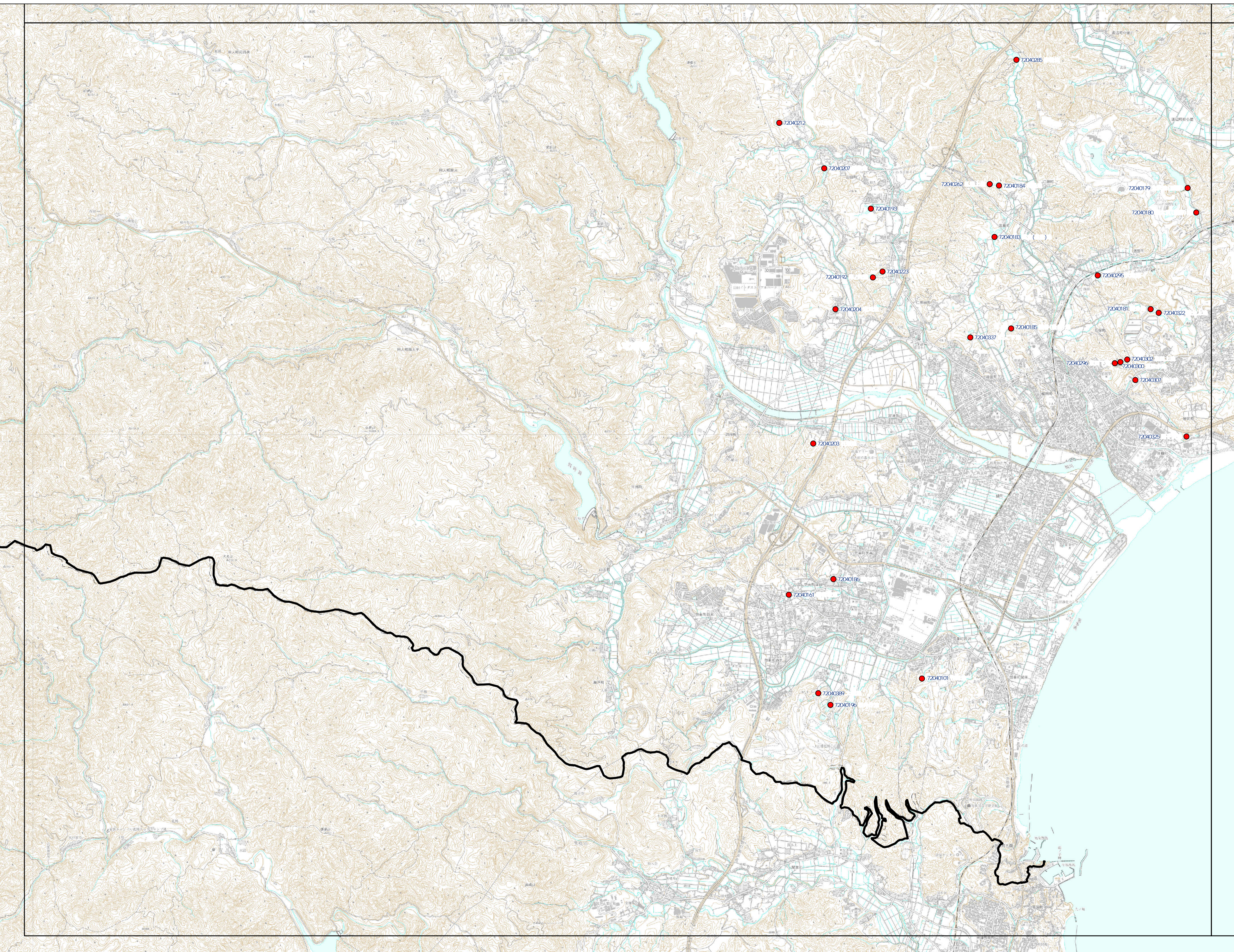
3 / 5




標高	面積 (㎡)	割合 (%)
7204005	202.1	120.0
7204006		12.0
7204007		7.0
7204008		10.0
7204009	119	3.0
7204010	114	2.5
7204011		25.0
7204012		7.0
7204013		144.0
7204014		178.0
7204015	142	8.0
7204016		18.0
7204017		15.0
7204018		15.0
7204019		19.0
7204020		25.0
7204021		3.0
7204022		3.0
7204023		100.0
7204024		18.0
7204025	71	8.0
7204026		5.0
7204027		12.0
7204028	70	17.2
7204029		12.0
7204030		15.0
7204031		70.0
7204032		20.0
7204033		40.0
7204034		12.0
7204035		50.0
7204036		15.0
7204037		36.0
7204038	50	2.4
7204039	23	3.0
7204040	75	18.0
7204041	1	17.0
7204042		5.0
7204043	66	1.0
7204044		9.0
7204045		3.0
7204046		20.0
7204047		4.0
7204048		9.0
7204049		7.0
7204050		25.1
7204051		10.0
7204052		2.0
7204053		2.0
7204054	16	7.0
7204055		2.8
7204056		12.0
7204057		3.0
7204058	17	15.0
7204059		21.0
7204060		16.0
7204061	95.1	11.0
7204062	81	5.0
7204063		7.4
7204064		3.7
7204065		3.7
7204066		1.0
7204067		0.9
7204068		1.4
7204069		3.0
7204070		1.2
7204071	1	153.0
7204072		1.9
7204073		4.5
7204074		3.6
7204075		1.2
7204076		2.0
7204077		2.5
7204078		5.3
7204079		29.0
7204080	86	2.4
7204081	66	0.5
7204082	33	1.8
7204083		35.0
7204084	49.1	50.0

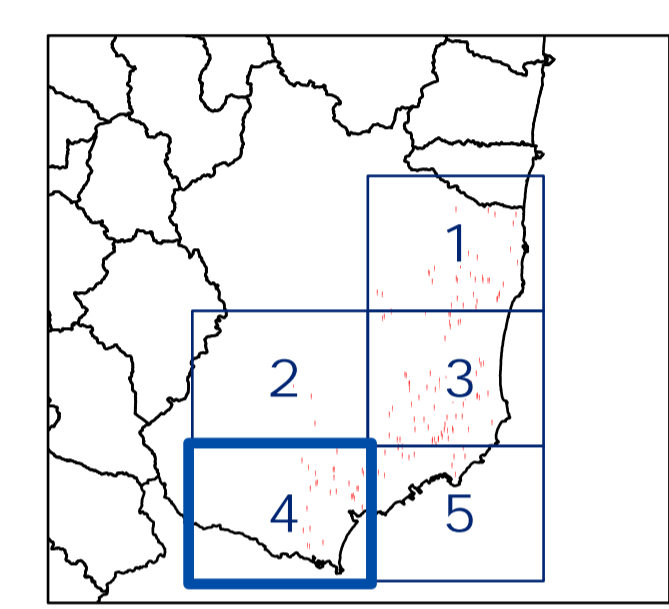
0246-22-7472





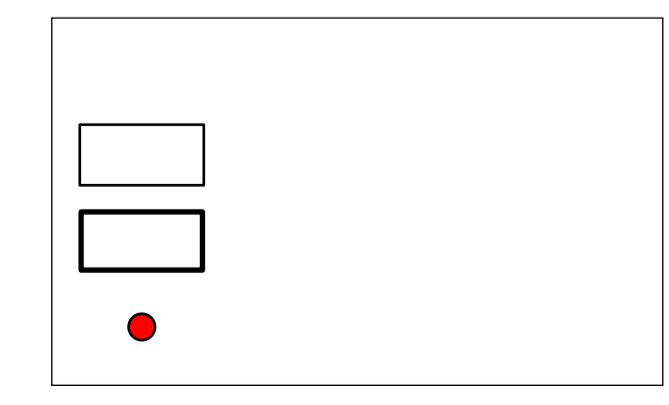

 S=1:25,000

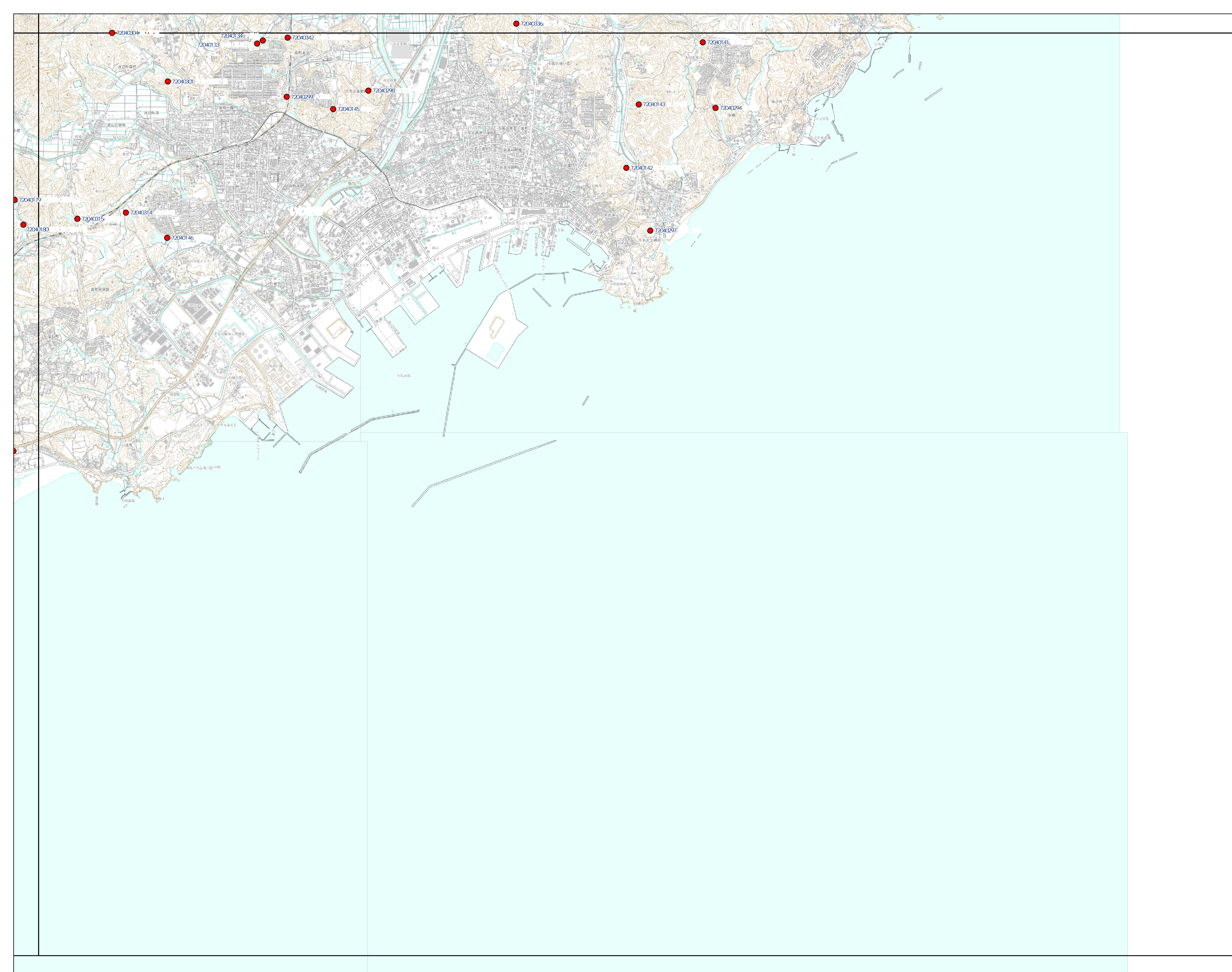
4 / 5




0246-22-7472	
--------------	--

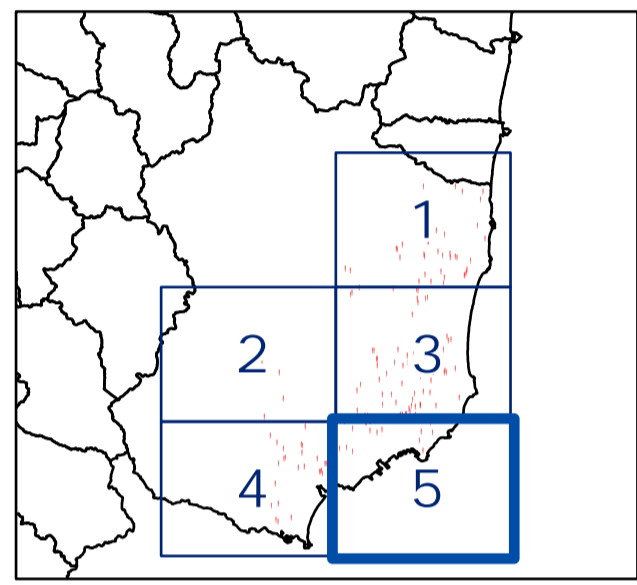
ID	Height (m)
72040101	3.0
72040161	4.0
72040179	90.0
72040180	29.0
72040181	10.0
72040183	37.7
72040184	11.0
72040185	15.0
72040186	2.0
72040192	6.2
72040196	15.3
72040196	12.0
72040203	2.2
72040204	5.0
72040207	5.4
72040212	5.0
72040223	3.0
72040262	1.4
72040285	26.0
72040296	3.5
72040296	12.0
72040300	4.0
72040302	1.0
72040307	22.0
72040322	2.0
72040325	4.0
72040337	1.0
72040389	1.0






 S=1:25,000

5 / 5



		0246-22-7472	
			(冊)
72040333		23-14	5.0
72040334		41	13.0
72040141			30.0
72040142			3.2
72040143			16.0
72040145			1.7
72040146			75.0
72040294			2.0
72040297		100	0.7
72040298			1.4
72040299		40-1	7.2
72040301			1.5
72040314			4.8
72040315		136-1 136-2	8.0
72040342		30	1.1

