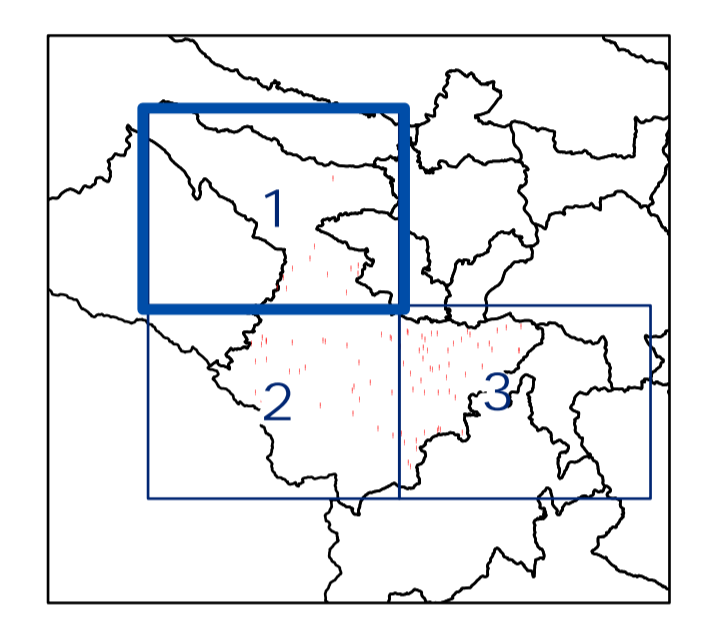


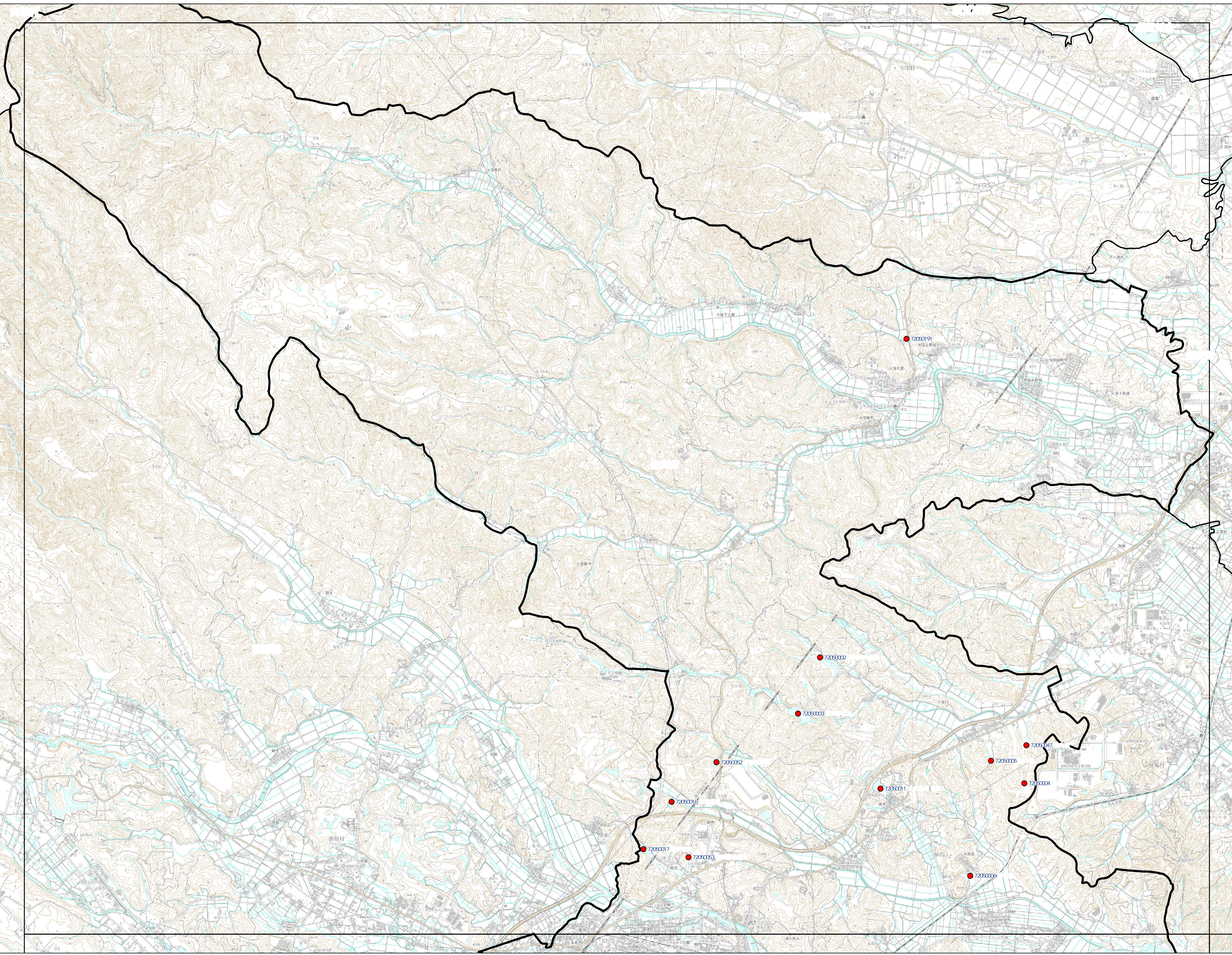
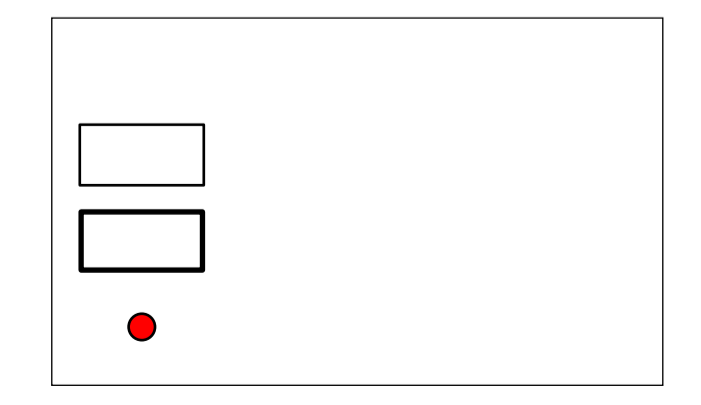
└  
S=1:25,000

1 / 3



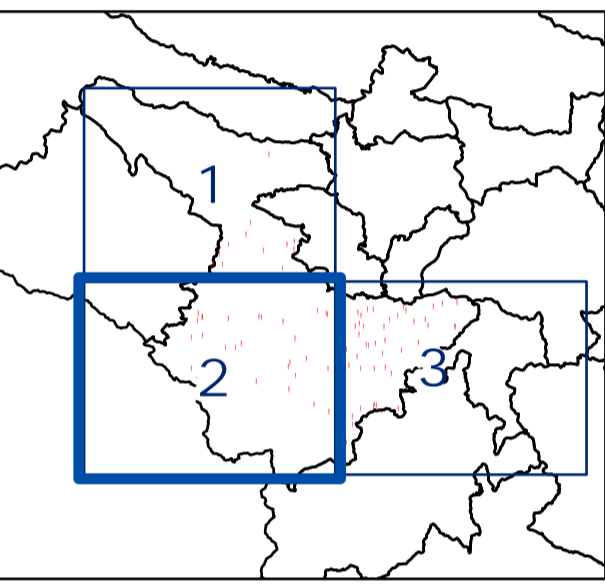
		0248-22-1111
--	--	--------------

		( ㎡ )
72050012	25	8.0
72050013	25	426.0
72050014	1	1.1
72050015	6.1	2.0
72050016	30	1.4
72050017	97	9.0
72050018	39	13.5
72050019	278.1	13.2
72050020	31	1.4
72050021	38	4.0
72050022	107	2.0
72050023	81	4.0



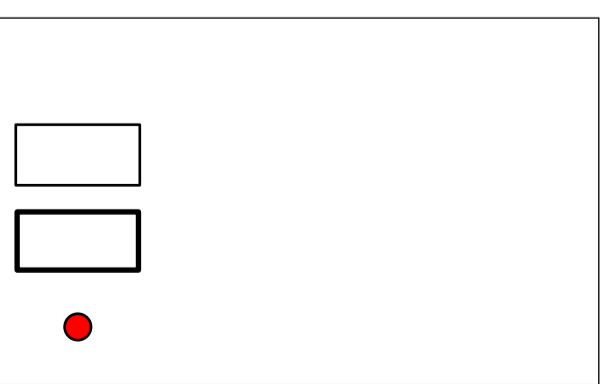
└  
S=1:25,000

2 / 3

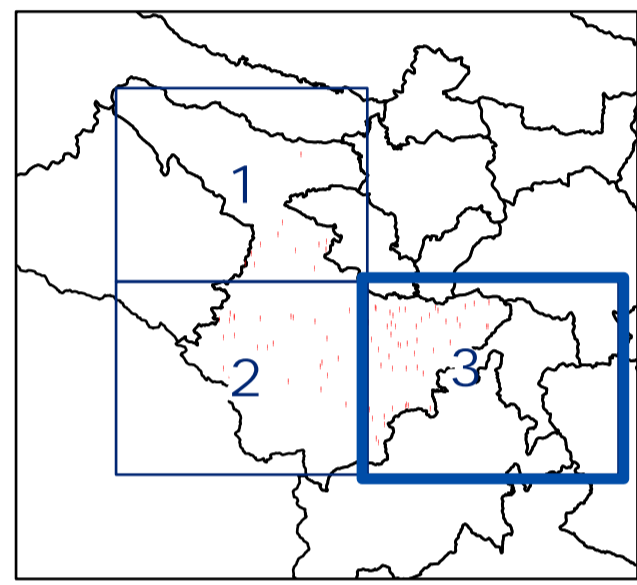


0248-22-1111

點號	類別	距離 (公尺)
72050034		8.1
72050025	No. 3	6.64
72050027	No. 1	6.98
72050039		66.1
72050030		1.1
72050032	No. 1	50.1
72050034		4.2
72050035		4.3
72050036		489.1
72050037		118.1
72050039		2.11
72050040		11.11
72050041		52
72050042		5
72050045		81
72050046		318.1
72050061		91
72050066	No. 2	1.1
72050068	No. 2	57
72050069	No. 1	1
72050078		67
72050085		4
72050086		13
72050088		1
72050092		61
72050093		1
72050095		62
72050096		4
72050098		19



└  
S=1:25,000



0248-22-1111		
點號	面積 (m <sup>2</sup> )	高度 (m)
72050018	77	1.0
72050020	33	1.8
72050054	72	4.1
72050071	144	10.3
72050072	144.4	2.2
72050073	155.1	4.3
72050074	156	26.5
72050076	46	52.8
72050077	1	108.9
72050079	144	139.0
72050080	15	10.9
72050081	24	12.8
72050082	49	34.7
72050083	35	32.9
72050084	72.1	46.2
72050087	139	129.7
72050088	29	4.9
72050089	145	12.6
72050097	145	33.1
72050099	2	4.1
7205010	50	4.4
7205012	1	66.5
7205013	15.4	15.4
7205016	123	13.7
7205017	122	12.8
7205018	146	2.9
7205019	5	4.1
7205021	57	65.2
7205021	58	58.6
7205022	125.3	7.9
7205023	100	14.0
7205024	23	12.8
7205025	140	12.3
7205026	140	12.3
7205027	38.4	23.2
7205028	38.4	23.2
7205029	38.4	23.2
7205030	38.4	23.2
7205031	38.4	23.2
7205032	38.4	23.2
7205033	38.4	23.2
7205034	38.4	23.2
7205035	38.4	23.2
7205036	38.4	23.2
7205037	38.4	23.2
7205038	38.4	23.2
7205039	38.4	23.2
7205040	38.4	23.2
7205041	38.4	23.2
7205042	38.4	23.2
7205043	38.4	23.2
7205044	38.4	23.2
7205045	38.4	23.2
7205046	38.4	23.2
7205047	38.4	23.2
7205048	38.4	23.2
7205049	38.4	23.2
7205050	38.4	23.2
7205051	38.4	23.2
7205052	38.4	23.2
7205053	38.4	23.2
7205054	38.4	23.2
7205055	38.4	23.2
7205056	38.4	23.2
7205057	38.4	23.2
7205058	38.4	23.2
7205059	38.4	23.2
7205060	38.4	23.2
7205061	38.4	23.2
7205062	38.4	23.2
7205063	38.4	23.2
7205064	38.4	23.2
7205065	38.4	23.2
7205066	38.4	23.2

